



Project ID 5347-00-00
County B - French Island
 T Campbell – C La Crosse Clinton Street
 to Lakeshore Drive La Crosse County

**PROJECT
 UPDATE**

<http://www.lacrossecountyb.com/>

Project Location & Limits

La Crosse County is planning to reconstruct two segments of roadway on County B on French Island in the Town of Campbell. The first segment of County B is 1.4 miles in length and runs from Clinton Street to 400' North of Olivet Court. The second segment of County B is 0.9 miles in length and runs from County BW (Lakeshore Drive) to 500' South of Fanta Reed Road. The interchange with I-90 is not a part of the improvement project. This project will reconstruct the existing roadway with alternatives that may include bicycle and pedestrian accommodations, reconfigured intersections to improve safety, and improved grading and storm water facilities.

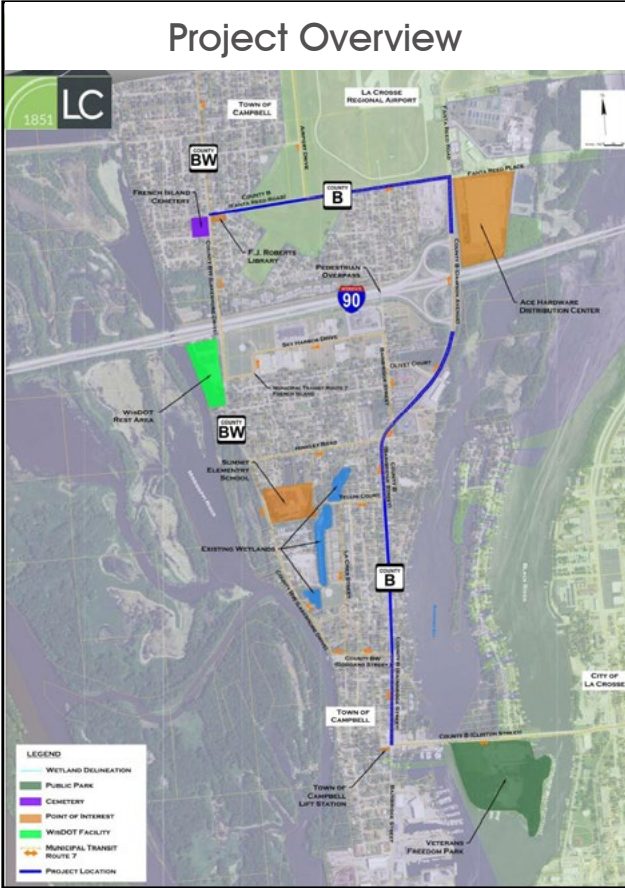
Purpose & Need

Purpose:

The Purpose of this roadway reconstruction project is to replace the existing deteriorating public infrastructure, including pavement and public utilities.

Needs:

- The current Pavement Surface Evaluation and Rating (PASER) rating for the subject roadway is 3. The PASER scale is a 1-10 rating system (10 being the best) for road pavement condition developed by the University of Wisconsin-Madison Transportation Information Center. PASER uses visual inspection to evaluate pavement surface conditions.
- There is a lack of bicycle and pedestrian facilities along the existing corridor.
- Improve safety and operations along the corridor and at intersections.
 - Clinton Street to Goddard Street has a crash rate that exceeds the statewide average for an urban arterial.
 - The intersection of Bainbridge Street & Dawson Avenue has a substandard skew angle causing site distance and safety concerns.



Study Components

The County B pavement is nearing the end of its useful life and is ready for replacement. The project will reconstruct the roadway which will include new pavement, base, and the replacement of drainage structures and pipes. The project is classified as a modernization project which requires the County to reconstruct highway pavement structures and geometric/cross-sectional features to meet Modernization service life cycles. A practical minimum design analysis period for Modernization projects is 20 years with many projects meeting a project service life cycle of more than 50 years.

As part of the County B reconstruction project on French Island in the Town of Campbell, a safety assessment, intersection traffic operations analysis, and several intersection traffic control alternatives comparison were completed. A peak hour intersection traffic operations analysis was completed for the seven study intersections along the corridor considering future traffic growth (Design year of 2045). It was determined that five of the seven intersections only had one feasible alternative. At the Clinton Street & Bainbridge Street intersection and at the Fanta Reed Road & Dawson Avenue intersections the county is considering two alternatives. Alternatives presented at the meeting include both a “replace in kind” and roundabout alternative at each of these two intersections.



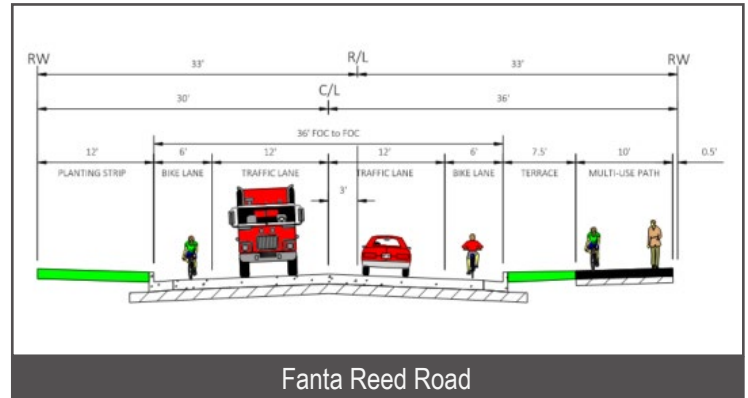
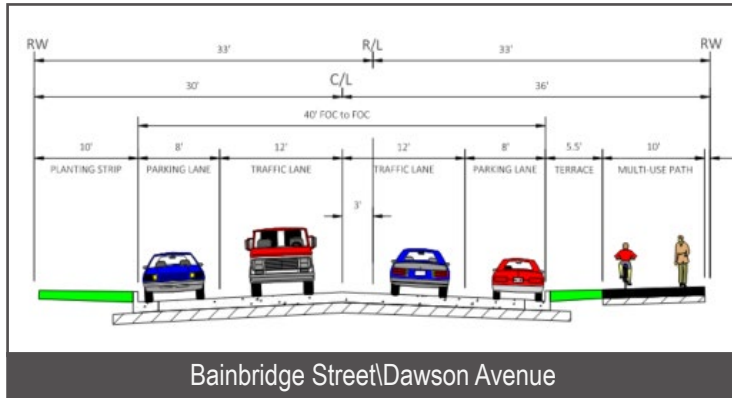
County B - French Island

T Campbell – C La Crosse Clinton Street to Lakeshore Drive La Crosse County

Proposed Build Alternative

La Crosse County recently met with the Town of Campbell and shared initial concepts regarding improvement alternatives being studied for the County B project. Incorporating feedback from the Town, the team is presenting the proposed build alternative for comment by stakeholders:

- County B (Bainbridge Street\ Dawson Avenue)
 - North\South 2-12' travel lanes;
 - parking on both sides of the roadway;
 - multi-use path on the east side of the roadway
- County B (Fanta Reed Road)
 - East\West 2-12' travel lanes;
 - 6' bicycle lane in both directions;
 - multi-use path on the south side of the roadway.



Project Schedule & Next Steps

	2020				2021				2022				TBD	
	❄️	☀️	☀️	🍁	❄️	☀️	☀️	🍁	❄️	☀️	☀️	🍁	❄️	☀️
Project Kick-Off														
Project Survey & Data Collection														
Live Website & Project Kick-off to the Public		★ June 2020												
Property Owner Meetings and/or Small Group Focus Meetings														
30% Conceptual Roadway Plans														
Public Involvement Meeting #1 - Display Study Alternatives					★ January 2021									
Public Involvement Meeting #2 - Display Recommended Alternative						★ April 2021								
Environmental Document														
60% Preliminary Roadway Plans														
Right-of-Way Acquisition														
Utility Coordination & Relocations														
Final Road Plans														
Public Involvement Meeting #3													★	

A schedule for construction has not been set.

We are looking for your feedback regarding the proposed build alternatives presented here today. Please provide comments by March 4, 2021 so that the project team may move forward with finalizing the environmental document for the project which will document and finalize the selection of the preferred alternative for the corridor.

The next steps for the design team include the 3D modeling of the proposed improvements so that we may identify and present anticipated right-of-way impacts at the next public meeting which is currently planned for spring of 2021.

Project Contacts:

Joe Langeberg, PE
 La Crosse County Highway Department
 JLangeberg@lacrossecounty.org
 608 / 786-3817

Mary Beth Pettit, PE
 GRAEF - Public Involvement Lead
 marybeth.pettit@graef-usa.com
 414 / 467-8912